



BREVETTATO

ECOLOGICAL VACUUM AUTOMATIC



Electric priming pump for water and not only...

The brand new **EVA** system, patented by **IRRILAND**, is an innovative automatic and electric priming system for pumps.



It is the alternative to the classic *manual priming pump*, by means of which you will no longer have to make any effort to load and fill the suction pipe of pumps, motor pumps, sprinklers and any pump that requires operation already loaded.



Priming a pump consists of filling the suction pipe, so as not to make the pump impeller run idle.



The advantages of operating a pump with already full draft are many, as the impeller seals do not overheat and the impellers themselves do not become deformed due to overheating.

Thanks to this innovative system, the system will no longer need a foot valve, as by pressing the EVA

activation button, the draft will be full in a few seconds.

Electric assisted suction system; **Eco-friendly, zero pollution.** Automatic shutdown with full pump. **Operation without oil.**

Therefore, the pumped air is not altered, polluted or contaminated.

Entirely made with anti-wear, self-lubricating and antioxidant materials. **Without maintenance.**



Built-in check valve, so **no foot valve or non-return valve is needed**. Low energy consumption, 24 Amps at 12 Volts.

EVA: 200 L/MIN – 8 mt suction height difference

EVA MINI: 65 L/MIN – 8 mt suction height difference



Unsurpassed performance, able to vacuum up to 8 mt in altitude

Quick and easy installation, even on field

Electrical system, with protection fuse, suitable for continuous operation

Series of accessories for any type of assembly



Dimensions:

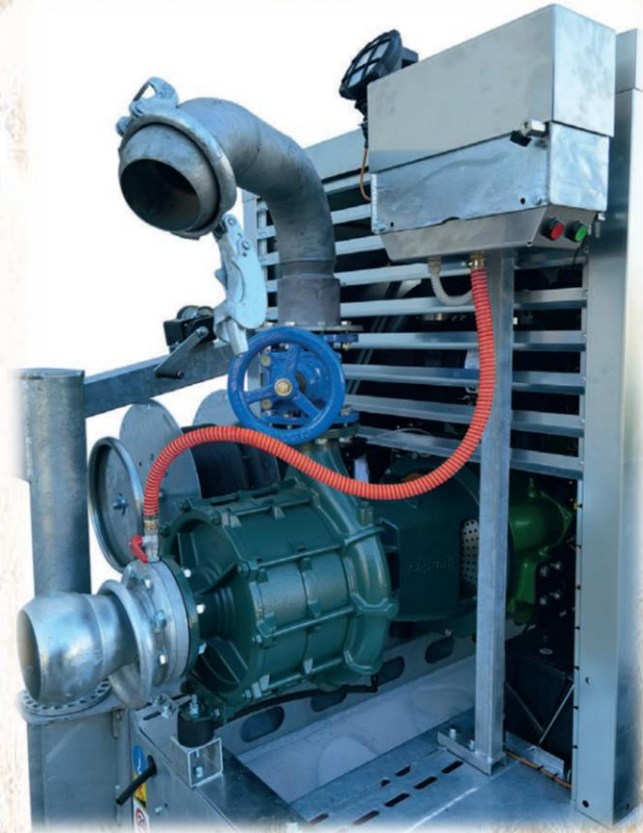
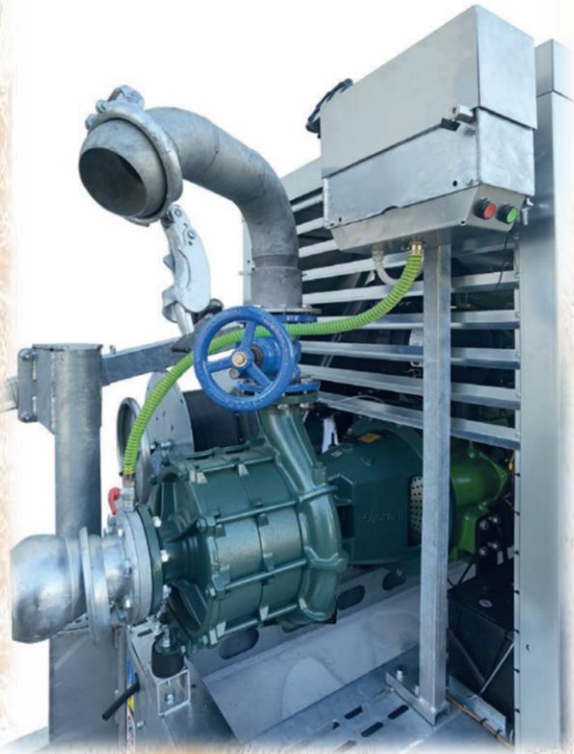
EVA: cm. 38x16 h.32 Weight Kg. 21

Packing dimensions: cm. 40x40 h.25 Weight Kg. 23

MiniEVA: cm17x17 h.31 Weight Kg.8

Packing dimensions: cm. 42x32 h.25 Weight Kg. 9

Temp min -20°C max 60°C



IRRILAND SRL
VIA P. TOGLIATTI,4
42016 GUASTALLA – REGGIO EMILIA
ITALY
TEL. +39 0522 831544
info@irriland.it
www.irriland.it

